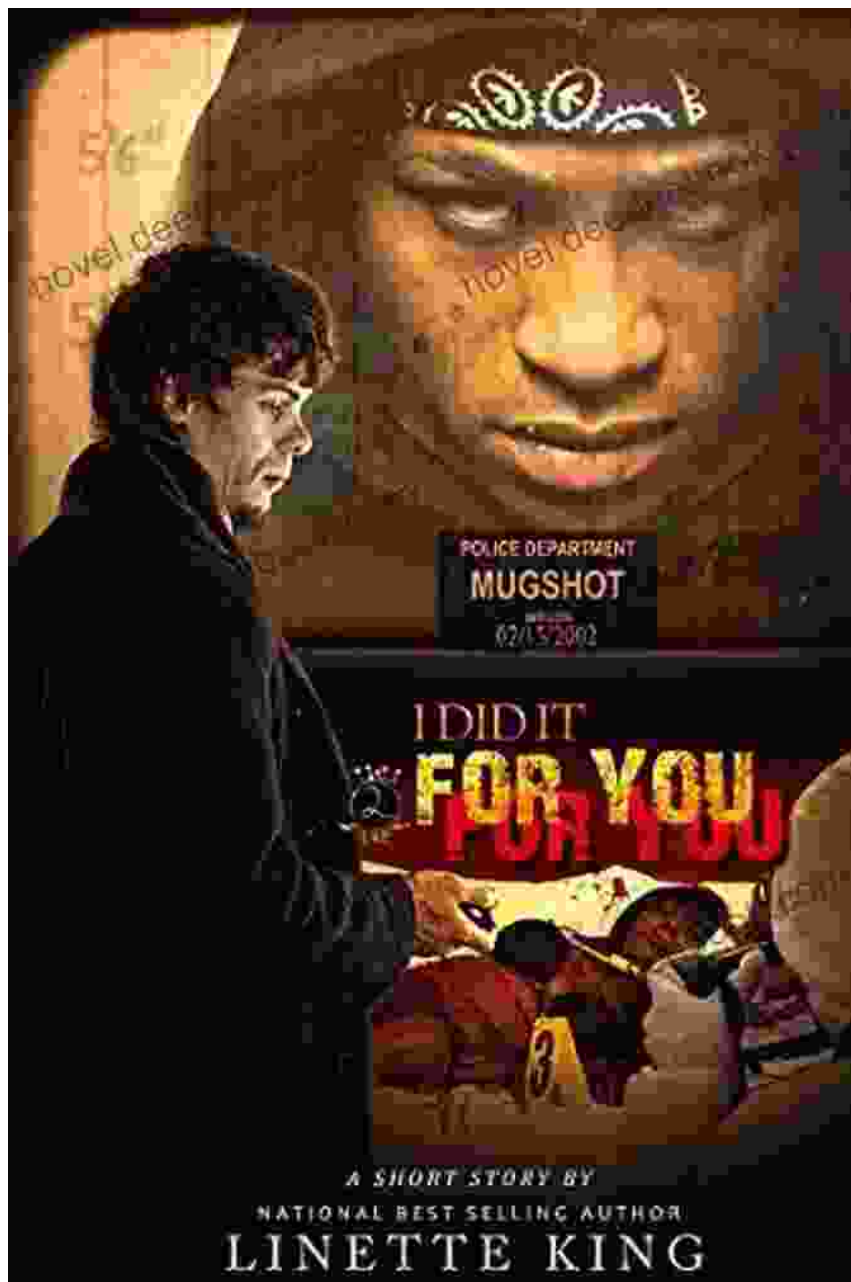


# She Ain't You: An Exploration of Identity and Belonging in Linette King's Powerful Novel



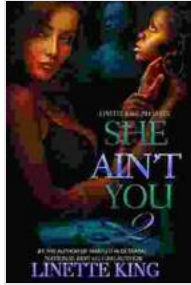
**She ain't You 2** by Linette King

★★★★★ 4.6 out of 5

Language : English

File size : 2901 KB

Text-to-Speech : Enabled



Screen Reader	: Supported
Enhanced typesetting	: Enabled
Word Wise	: Enabled
Print length	: 231 pages
Lending	: Enabled



Linette King's debut novel, "She Ain't You," is an unflinching exploration of identity, belonging, and the search for self-acceptance. Set against the backdrop of 1980s Brooklyn, the novel follows the journey of Eden, a young Black girl navigating the complexities of race, class, and adolescence.

Through Eden's eyes, we witness her struggles to reconcile her own identity with the expectations imposed upon her by society. King's lyrical and evocative prose captures the raw emotions of Eden's experiences, offering a poignant and insightful examination of the challenges faced by Black women in search of their place in the world.

### **Themes of Identity and Belonging**

One of the central themes in "She Ain't You" is the exploration of identity and belonging. Eden's search for self-acceptance is a complex and ongoing process, as she navigates the often-contradictory messages she receives about her Blackness and her femininity.

On the one hand, Eden is pressured to conform to societal standards of beauty and success, which often exclude Black women. She struggles with feelings of inadequacy and self-doubt, as she compares herself to the white, thin, and conventionally attractive girls around her.

On the other hand, Eden also finds a sense of belonging and empowerment within her Black community. She forms strong bonds with her family and friends, who provide her with love, support, and a sense of cultural identity. Through these relationships, Eden begins to appreciate the beauty and strength of her own Blackness.

## **The Search for Self-Acceptance**

The search for self-acceptance is a major thread that runs throughout the novel. Eden's journey is marked by moments of doubt, insecurity, and even self-hatred. However, she also experiences moments of growth and resilience, as she learns to embrace her unique qualities and find her own voice.

King's writing captures the complexities of Eden's emotional journey with authenticity and sensitivity. She portrays Eden as a flawed and relatable character, whose struggles and triumphs resonate with readers from all backgrounds. Through Eden's experiences, King challenges readers to question their own biases and to embrace the beauty and value of diversity.

## **Writing Style and Literary Devices**

"She Ain't You" is not only a thought-provoking story but also a literary achievement. King's writing is lyrical and evocative, using a rich tapestry of metaphors, similes, and imagery to bring her characters and themes to life.

King's use of language is particularly striking in her descriptions of Eden's emotional experiences. She employs sensory details and vivid imagery to create a palpable sense of Eden's inner world. This immersive writing style allows readers to connect deeply with the protagonist and to experience her journey alongside her.

In addition to her lyrical prose, King also employs a variety of literary devices to enhance the impact of her story. These devices include flashbacks, foreshadowing, and stream-of-consciousness narration. Through these techniques, King provides a fragmented and non-linear narrative that reflects Eden's own complex and evolving consciousness.

"She Ain't You" is an unforgettable novel that explores the complexities of identity, belonging, and self-acceptance. Linette King's masterful writing and poignant storytelling create a powerful and moving narrative that resonates with readers on a deeply personal level.

Through the journey of Eden, King challenges societal norms and invites us to question our own biases. Her novel is a celebration of Black women's voices, stories, and experiences, and it serves as an important reminder of the strength and resilience that can be found in embracing one's unique identity.



## She ain't You 2 by Linette King

★★★★☆ 4.6 out of 5

Language	: English
File size	: 2901 KB
Text-to-Speech	: Enabled
Screen Reader	: Supported
Enhanced typesetting	: Enabled
Word Wise	: Enabled
Print length	: 231 pages
Lending	: Enabled

FREE

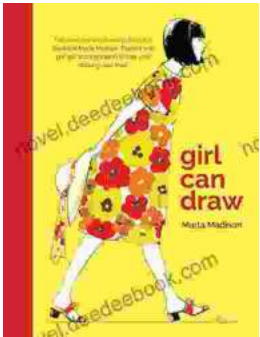
DOWNLOAD E-BOOK





## Performing Asian American Women On Screen And Scene

The representation of Asian American women on screen and stage has undergone a significant evolution in recent decades, reflecting the growing visibility and influence of the...



## Girl Can Draw: A Spirited and Inspiring Play by Joe Penhall

Prologue In the realm of contemporary drama, Joe Penhall's "Girl Can Draw" stands as a beacon of inspiration and thought-provoking storytelling. This...